




# A11.1506

Biological Microscope

## Catalogue



# Biological Microscope

**A11.1506** 

-  Total Magnification: 40X~400X
-  Monocular Vertical Tube, Coarse Focus
-  Simple Structure And Nice Appearance
-  Featured By clear Image, Easy Operation



**Don't Miss Best Microscope For You!**

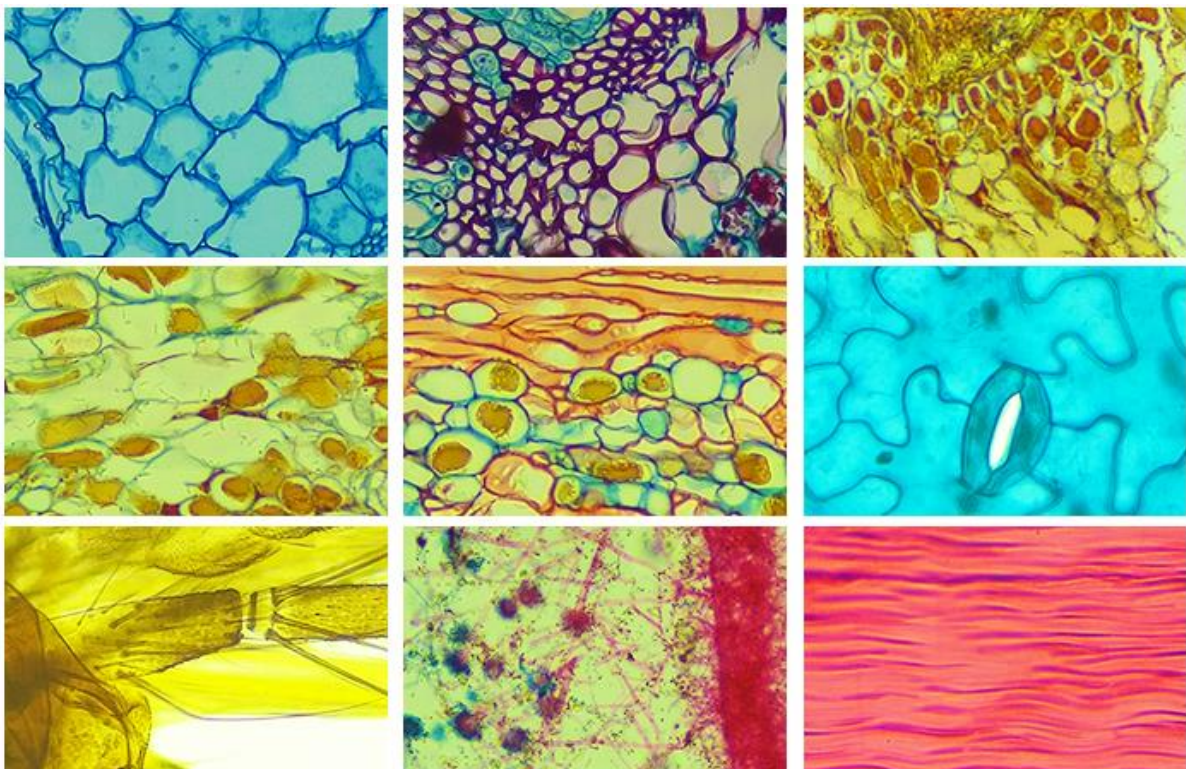
| A 11.1506 Specification |   | A1 | A2 | A3 |
|-------------------------|---|----|----|----|
| Total Magnification     | 40x-400x  | •  | •  | •  |
| Head                    | Monocular Vertical Head Tube  | •  | •  | -  |
|                         | Monocular 45°Inclined,360°Rotatable   | -  | -  | •  |
| Eyepiece                | WF10x   | •  | •  | •  |
| Objectives              | 4x  | •  | •  | •  |
|                         | 10x   | •  | •  | •  |
|                         | 40xs  | •  | •  | •  |
| Focusing                | Coarse Adjustment Range: 20mm   | •  | -  | -  |
|                         | Separate Coarse And Fine Adjustment, Coarse Adjustment Range: 20mm, Fine Adjustment Range : 1.4~1.6mm | -  | •  | •  |
| Stage                   | Plain Stage With Clips,100mmx90mm   | •  | •  | •  |
| Illuminator             | Concave-Plano Mirror Dia. 40mm  | •  | •  | •  |
| Optional Accessories    |   |    |    |    |
| Illuminator             | Electrical Illuminator (110V/220V 20W)  |    |    |    |

## ● A11.1506 Biological Microscope



## ● A11.1506 Biological Microscope Practical Application

The Biological Microscope Model A11.1506, Can Be Used In Teaching Experiment For Primary And Secondary Schools. It Is Featured By Clear Image, Easy Operation, Simple But Reliable Structure And Nice Appearance. Stration And Other Occasions.



● A11.1506 Product Description



▲ A11.1506-A1 Monocular Coarse Focus Biological Microscope



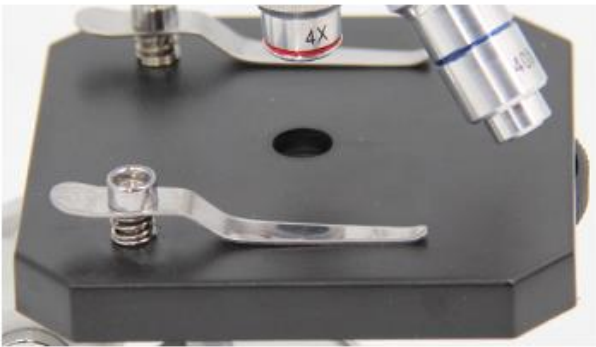


▲ A11.1506-A2 Monocular Separate Coarse And Fine Focous Adjustment Biological Microscope



▲ A11.1506-A3 Inclined Monocular Separate Coarse And Fine Focous Adjustment Biological Microscope

## ● A11.1506 User Instruction

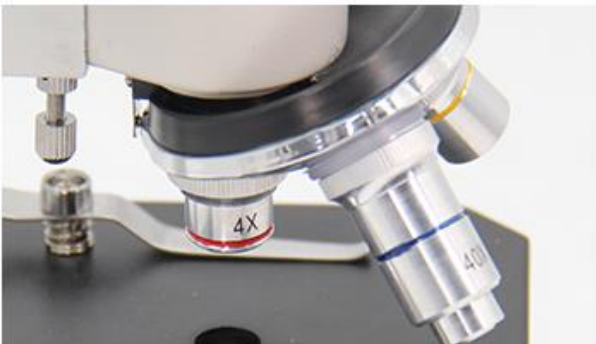


### 01 WORKING STAGE

Put The Sample Slice Required To Observe On The Center Of The Stage, At The Center Of The Round Hole. Press Firmly With Two Pieces Of Spring.

### 02 ILLUMINATOR

Face The Mirror Toward A Light Source, Such As A Fluorescent Lamp Or A Window, To Conduct Light Into The Microscope And Obtain A Bright Field Of View.



### 03 OBJECTIVE

Achromatic 4x, 10x, 40x Objectives Included. Put The Objective Needed To Observe To The Center Under Low Magnification 4x, Rotate Coarse Focus Till Presence Of The Clearest Image Before High Magnification Observation.

### 04 FOCUSING

After The Replacement Of The High Magnification Lens, View From Eyepiece, In Case Of An Unclear Image, Rotate Coarse Focus Until A Clear Image Is In The View.



## PACKING AND SHIPPING

**Packing** : Cardbox And Polyfoam + Strong Master Carton 15\*21\*34cm, G.W.: 2.0Kgs

**Shipping Time** : 3-10 Days From Stock



We Remain Right To Change Technical Data Without Notice Due To Upgrade.